

Smart LED

INSTRUCTION MANUAL - Interactive
MODEL : GR-532-4



WELDEX CO., LTD.
THE WELDING EXPERT

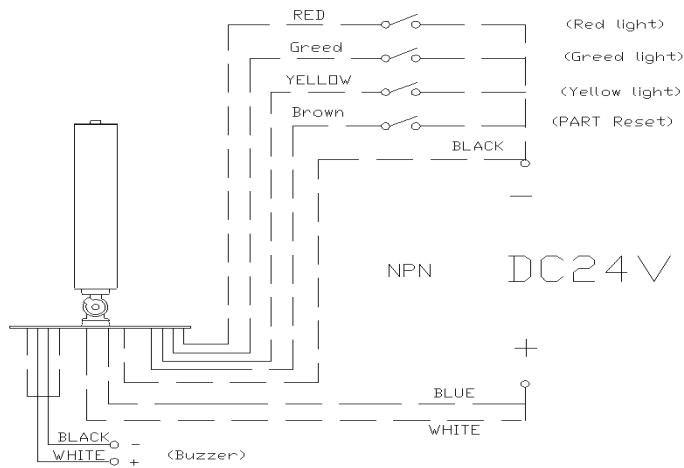


-- Table of Contents--

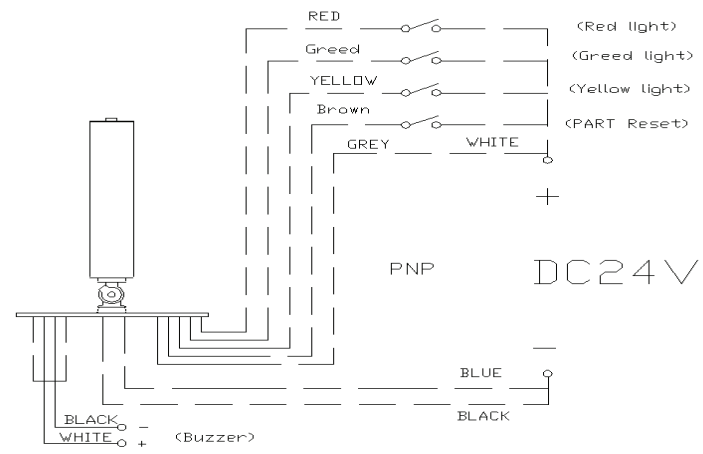
1.GR-532-4 Wiring and dimensions.....	P.2
1.1.NPN Wiring.....	P.2
1.2.PNP Wiring.....	P.2
1.3.Product dimensions.....	P.2
2.Action sequence.....	P.2
2.1.Action sequenc.....	P.3
3.WIFI setting IP.....	P.3
3.1.Find WIFI network settings.....	P.3
3.2.Find SMART LED WIFI.....	P.4
3.3.Setting SMART LED IP.....	P.5
4.Software Installation.....	P.6
5.Start the GRAIN_LED_Board_software.....	P.7
6.Set up software connection IP	
6.1.Set up software connection IP.....	P.7
6.2 If SmartLED light IP is caught, the green light will be displayed.....	P.11
7.Software operation	
7.1.Grip Map.....	P.8
7.2.Multi Detail.....	P.8
7.3.Remote Set.....	P.8
7.4.Parameter.....	P.9
8.Generate Report Excel --> Report Excel.....	P.10
9.Open CSV (Select machine) (note : Allow excel macros)	P.10
10.Example.....	P.11

1.GR-532-4 Wiring and dimensions

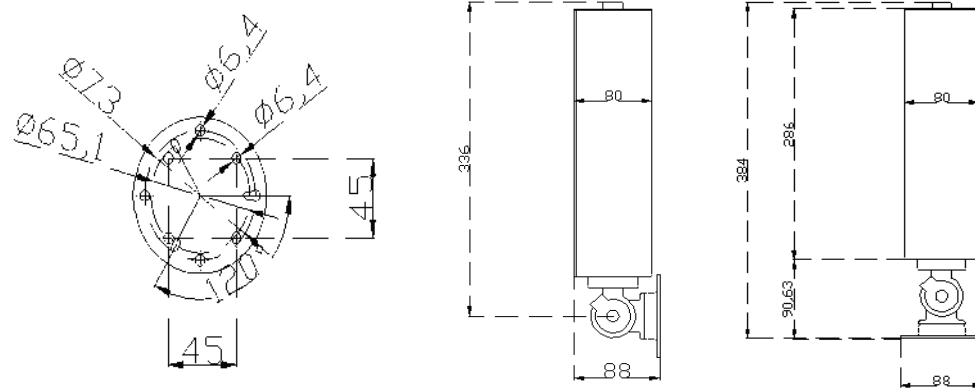
1.1 NPN Wiring



1.2 PNP Wiring



1.3 Product dimensions



2. Action sequence

一般燈號顯示		V:必要滿足條件			
紅燈	異常警示燈	>200ms	>200ms	...	可閃爍1個-N個
綠燈	工作顯示燈			>200ms	...
黃燈	待機顯示燈			>200ms	...
記數增加(燈號轉換模式)		V:必要滿足條件			
綠燈	工作顯示燈		>200ms	>200ms	計數增加
黃燈	待機顯示燈	>200ms	V		>200ms

3.WIFI setting IP

3.1.Find WIFI network settings

Please connect to the same WIFI network that would be used with SmartLED.



3.1.2.After successfully connecting to WIFI, press keyboard windows+R , key in “cmd”, press enter, open the command prompt, keyin “ipconfig” to confirm the subnet mask and Gateway.

命令提示字元

```
C:\Users\user>ipconfig

Windows IP 設定

以太网网卡 以太网:

    媒体状态 . . . . . : 媒体已中断连线
    连线特定 DNS 尾码 . . . . . :

无线区域网络介面卡 区域连线* 9:

    媒体状态 . . . . . : 媒体已中断连线
    连线特定 DNS 尾码 . . . . . :

无线区域网络介面卡 区域连线* 10:

    媒体状态 . . . . . : 媒体已中断连线
    连线特定 DNS 尾码 . . . . . :

无线区域网络介面卡 Wi-Fi:

    连线特定 DNS 尾码 . . . . . :
    连结-本机 IPv6 位址 . . . . . : fe80::b8d7:7f41:5832:13eb%6
    IPv4 位址 . . . . . : 192.168.100.100
    子网路遮罩 . . . . . : 255.255.255.0
    预设閘道 . . . . . : 192.168.100.1
```

- **Make a note of the “Default Gateway IP”** (In this example is 192.168.100.1) ,
- **Make a note of the “Subnet Mask IP”** (In this example is 255.255.255.0) ,

These two parameters will be used when setting the IP of Smart LED in 3.3
(If you already know the “default gateway IP” or “subnet mask” ,
you can skip 3.1 and go directly to 3.2)

3.2.Find SMART LED WIFI

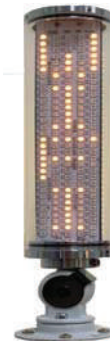
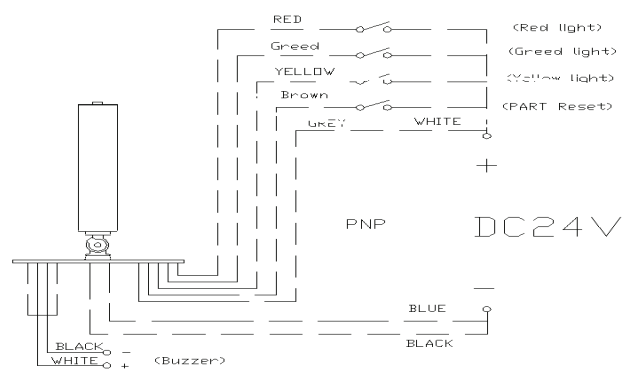
Press down button of (part reset) for 3 seconds ’

(※Note: This action will cause the SmartLED to restart, please pay attention to whether machine is in production, otherwise it may cause loss of production data)

Press down button of (part reset) for 3 seconds ’ The GR-532-4 panel would displays "WIFI", and WIFI will be turned on for searching. At this time, WIFI will be turned on for 120 seconds. If time expires, WIFI will be turned off for searching, please repeat 3.2 Press (part reset) again for 3 seconds to restart

(If you have not connected to any WIFI, the default three-color light will turn on the WIFI setting for 120 seconds, please search for WIFI directly)

Find SmartLED_XXX WIFI with mobile phone & PAD computer WIFI settings



3.3 Setting SMART LED IP

SmartLED_C7133C

SmartLED_C7133C

WiFi設置
(SCAN WiFi 2~3s)

離開

- 尚未設定AP

Set connection WIFI IP

GRAIN_Company	100%		←	Select the WIFI SSID to connect (It is recommended to choose WIFI with better network connection status)
GRAIN	72%			
43Y310677	62%			

SSID				
	GRAIN_Company	←	Select above. The SSID will be automatically entered	
Password	←	Enter the WIFI password, (no need to set it every time, just enter it once) When SmartLED Restart , SmartLED will automatically connect to the WIFI	
靜態IP(Static IP)	192.168.100.210	←	Set SmartLED IP (static IP for software connection)	
靜態閘道器(Static Gateway)	192.168.100.1	←	Paste the gateway of the connected network record in step 3.1.2	
子網路遮罩(Subnet)	255.255.255.0	←	Paste the subnet of the connected network record in step 3.1.2	
儲存設定 (SAVE WIFI SETTING)		←	Enter to save the WIFI settings	
重整頁面 (Refresh Page)				
重新掃描WiFi (SCAN WiFi)		←	If there is no WIFI you want to connect You can press SCAN again.	

4.software installation:

秀鴻智慧燈軟... Save it to your computer, open the file folder



Press EXE to Use
NO Need for install

5.Open the GRAIN_LED_software



Enter parameter setting



6.Set the software connection IP

6.1 Set the software connection IP



6.2 If SmartLED light IP is caught online, the green light will be displayed
Remarks: If the green light is not displayed, please confirm whether the WIFI connection is normal.



7. Software operation

7.1 Grip Map

Multi-machine details: display the current machine status + dispatch data + record and export csv every N seconds (standard version output csv)

Remarks: Stay on the grid map or multi-machine detailed page to grab data (Only in these 2 pages)



7.2 Multi Detail



7.3 Remote Set



Remote settings: Use the software to set the machine name/product name/employee ID/employee name of SmartLED Change the currently recorded "machine name" + "product name" + "employee ID" + "employee name" + mode (1~6), If the setting is successfully changed, then enter the

“Grid Map” or “Multi-machine Details”, the names of personnel/products recorded in the output of the csv file will also be changed accordingly (record)

In Mode3/4, there is a countdown mode, which can set the countdown time and color change time
Ex: 60 seconds countdown, 10 seconds will change color, so that person can know in advance that the processing is about to be completed

7.3.1.Order/Dispatch

Or use computer/mobile phone/iPad

Enter http://set IP/order (set IP to SmartLED IP)

Ex: http://192.168.100.210/order

SMARTLED_SETTING

SETTING

DeviceName:
Device1

Program:
program1

Employee_ID:
1

Employee_name:
Kevin1

Submit

Enter http://set IP/order (set IP to SmartLED IP)

http://192.168.100.210/input_DeviceName?value=1

Value is the data to be input

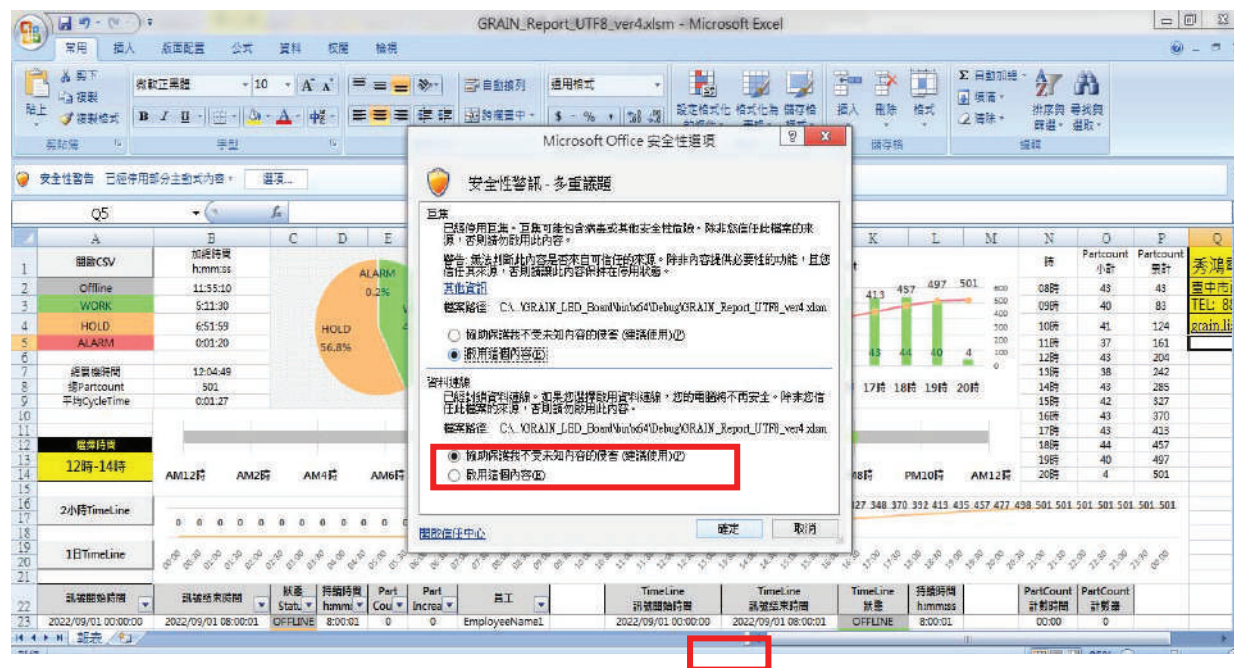
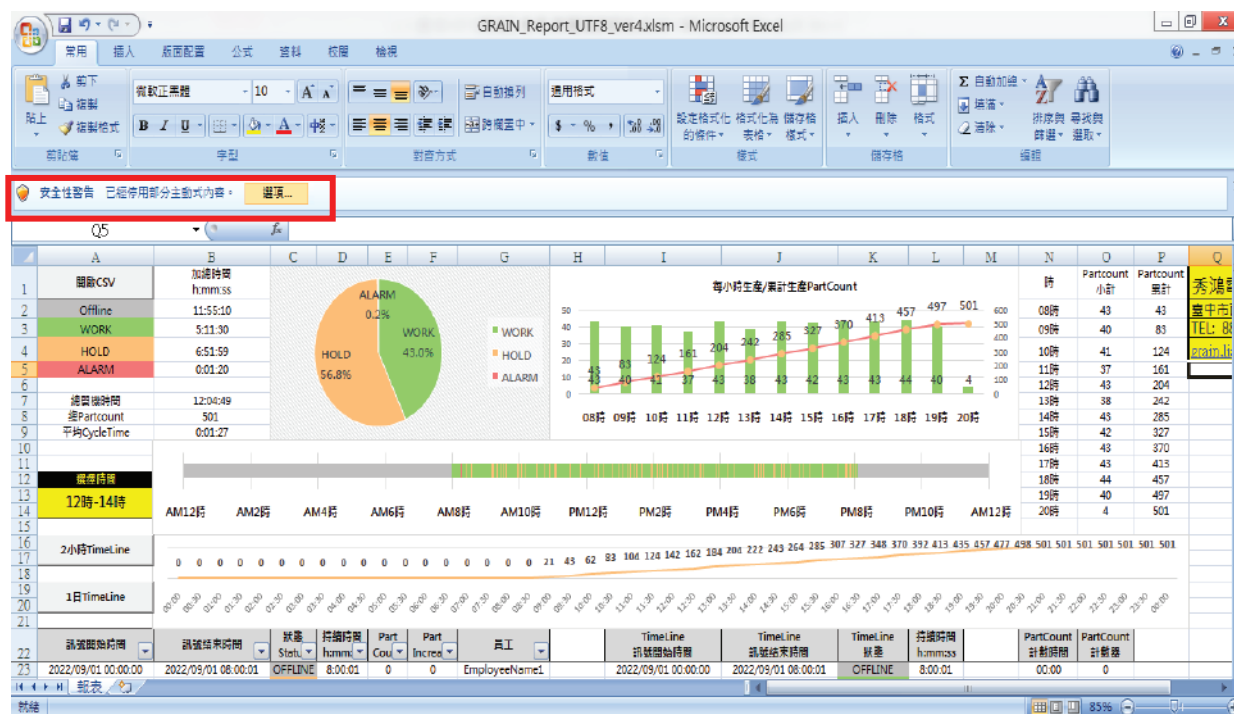


7.4.Parameter Setting

8. Generate report → report Excel

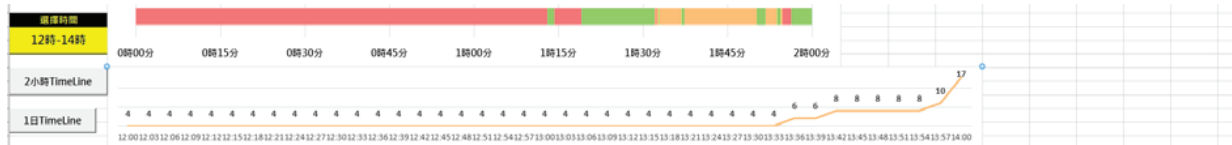
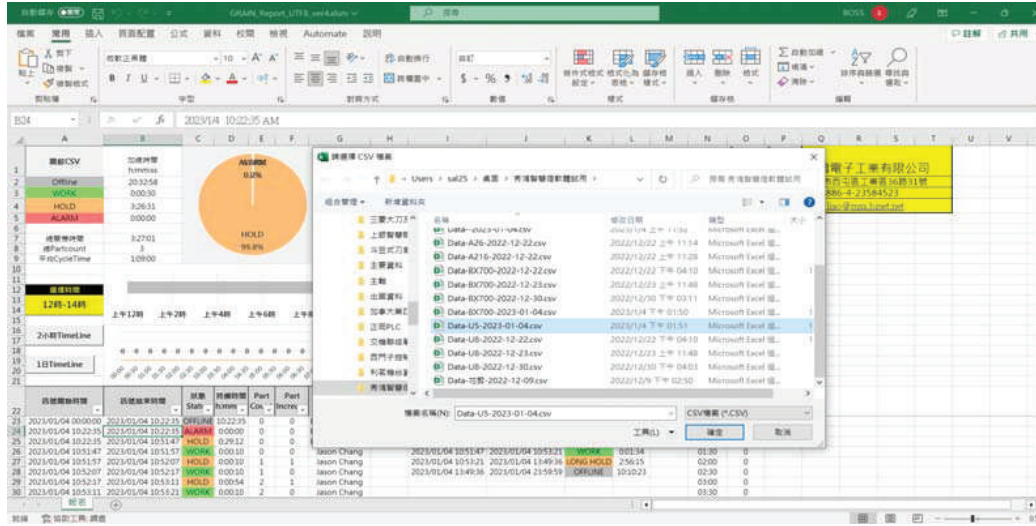
9. Open CSV (select machine) (Note: macros must be allowed) → to query the report of the day (example below)

Enter excel, there is a “Security Warning” column at the top, click “Options”, the first macro: “Enable this content”, (if there is a second network connection, it does not need to be opened)

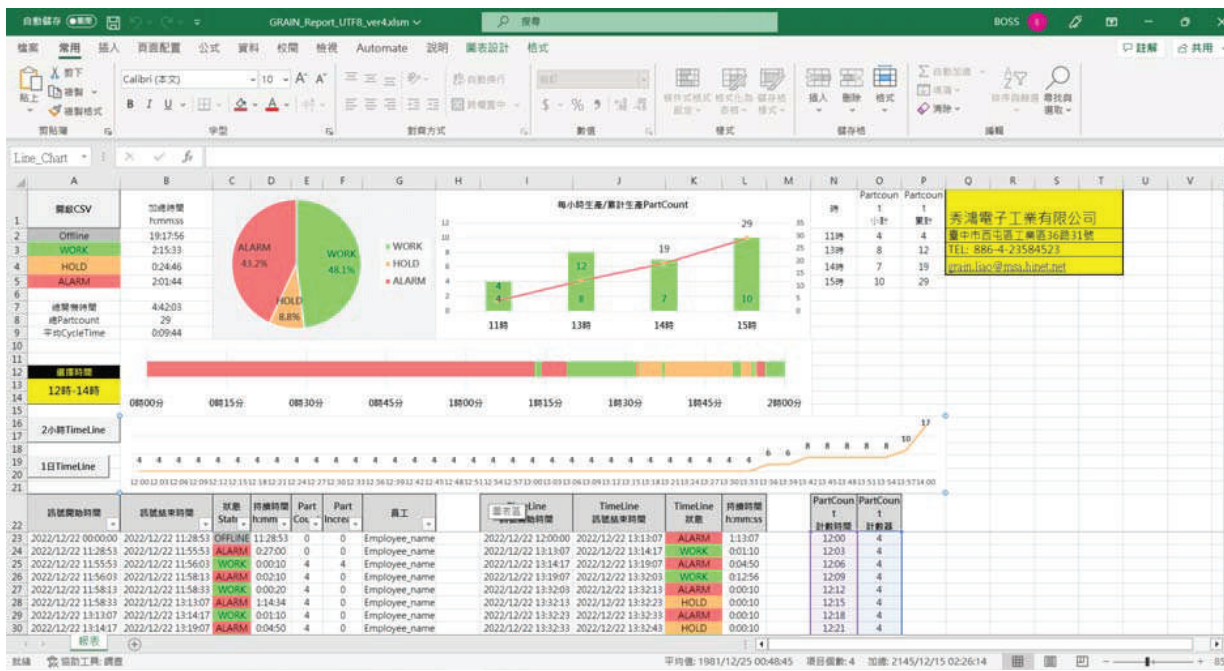


10.example :

In the A1 column of Excel, there is a button of "Open csv", which can open the output report, and the report of the day will be sorted into it. Near A13~A14, you can choose to view only two hours. Press the button A16~A17 and it will be Displays two hours. A19~A21 displays the whole day.



A two-hour interval can be selected:





GRAIN_Report_UIT8_ver4.xlsx

Line_Chart

Category	Count	Percentage
WORK	48.1%	48.1%
ALARM	43.7%	43.7%
HOLD	8.8%	8.8%

每小時生產/累計生產PartCount

Time	PartCount
11時	4
13時	12
14時	19
15時	29

Time	PartCount	PartCount
11時	4	4
13時	8	12
14時	7	19
15時	10	29

時間	狀態	持續時間	Part Coc	Part Incret	員工	TimeLine 狀態開始時間	TimeLine 狀態結束時間	TimeLine 狀態	持續時間 h:mm:ss	PartCount 計劃時間	PartCount 計劃數
2022/12/22 00:00:00	OFFLINE	0:00:00	0	0	Employee_name	2022/12/22 00:00:00	2022/12/22 11:28:53	OFFLINE	11:28:53	00:00	0
2022/12/22 11:28:53	ALARM	0:00:00	0	0	Employee_name	2022/12/22 11:28:53	2022/12/22 11:55:53	ALARM	0:27:00	00:30	0
2022/12/22 11:55:53	WORK	0:00:30	4	4	Employee_name	2022/12/22 11:55:53	2022/12/22 11:56:03	WORK	0:00:10	01:00	0
2022/12/22 11:56:03	ALARM	0:02:30	4	0	Employee_name	2022/12/22 11:56:03	2022/12/22 11:58:13	ALARM	0:02:10	01:30	0
2022/12/22 11:58:13	WORK	0:00:20	4	0	Employee_name	2022/12/22 11:58:13	2022/12/22 11:58:33	WORK	0:00:20	02:00	0
2022/12/22 11:58:33	ALARM	1:14:34	4	0	Employee_name	2022/12/22 11:58:33	2022/12/22 13:13:07	ALARM	1:14:34	02:30	0
2022/12/22 13:13:07	WORK	0:01:30	4	0	Employee_name	2022/12/22 13:13:07	2022/12/22 13:14:17	WORK	0:01:10	03:00	0
2022/12/22 13:14:17	ALARM	0:04:50	4	0	Employee_name	2022/12/22 13:14:17	2022/12/22 13:19:07	ALARM	0:04:50	03:30	0

WELDEX

WELDEX CO., LTD.

Chalerm Phrakiat Rama9 Road, Prawet Subdistrict, Prawet District, Bangkok 10250

TEL: (+66)2 726 8899 Fax:(+66)2 726 8944

EMAIL: Info@weldex.co.th



website



facebook



map